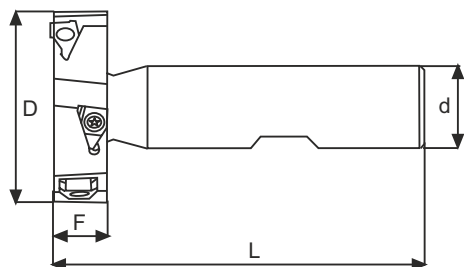


## DWKC...

Woodruff key seat cutter  
 Fraises pour rainures woodruff  
 Fräsen für Woodruff-Nuten  
 Fresas Woodruff para acanalar

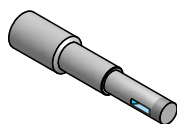
Fresa per cave woodruff per inserto TEHW0602



Codice Code	Dimensioni / Dimensions					Inserto Insert	Parti di ricambio / Spare parts	
	D	d	Z	F	L			
DWKC-195-TE06-10	19.5	10	2	5	63	TEHW0602	TX2005D	BTX06
DWKC-196-TE06-10	19.5	10	2	6	63	TEHW0602	TX2005D	BTX06
DWKC-225-TE06-10	22.5	10	2	5	63	TEHW0602	TX2005D	BTX06
DWKC-226-TE06-10	22.5	10	2	6	63	TEHW0602	TX2005D	BTX06
DWKC-228-TE06-10	22.5	10	2	8	63	TEHW0602	TX2005D	BTX06
DWKC-256-TE06-10	25.5	10	3	6	63	TEHW0602	TX2005D	BTX06
DWKC-286-TE06-10	28.5	10	6	6	63	TEHW0602	TX2005D	BTX06
DWKC-288-TE06-10	28.5	10	6	8	63	TEHW0602	TX2005D	BTX06
DWKC-2810-TE06-12	28.5	12	6	10	71	TEHW0602	TX2005D	BTX06
DWKC-328-TE06-12	32.5	12	6	8	71	TEHW0602	TX2005D	BTX06
DWKC-3210-TE06-12	32.5	12	6	10	71	TEHW0602	TX2005D	BTX06
DWKC-4510-TE06-12	45.5	12	6	10	71	TEHW0602	TX2005D	BTX06

MATERIALI - MATERIALS		HB	fz (mm)	ap (mm)	Velocità di Taglio - Cutting Speed - Vc m/min					
P	ACCIAIO NON LEGATO - NOT ALLOY STEEL	120-300	0,03-0,06	1-3			PM4630		PM6515	
	ACCIAIO LEGATO - ALLOY STEEL	180-350	0,03-0,06	1-3			250			
	ACCIAIO ALTO LEGATO - HIGH ALLOY STEEL	300-330	0,03-0,06	1-3			180			
M	INOX AUSTENITICO - DUPLEX - STAINLESS STEEL	180-230	0,03-0,06	1-3						
K	GHISA GRIGIA - GREY CAST IRON	120-260	0,03-0,06	1-3					180	
	GHISA SFEROIDALE - SPHEROIDAL CAST IRON	160-250	0,03-0,06	1-3					160	
	GHISA MALLEABILE - MALLEABLE CAST IRON	130-230	0,03-0,06	1-3					180	
N	ALLUMINIO E SUE LEGHE - ALUMINIUM	60-130	0,03-0,06	1-3					1000	
	RAME E SUE LEGHE - COPPER	90-110	0,03-0,06	1-3					400	
	NON METALLICI - PLASTICS		0,03-0,06	1-3					500	
S	LEGHE RESIST. AL CALORE - HIGH TEMP. ALLOY	200-320	0,03-0,06	1-3					40	
	TITANIO E SUE LEGHE - TITANIUM	400-1050	0,03-0,06	1-3					40	

Tipo di lavorazione - Recommended machining types



F x 10



L 2 - L 7

