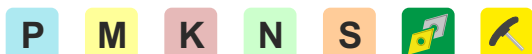
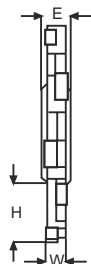
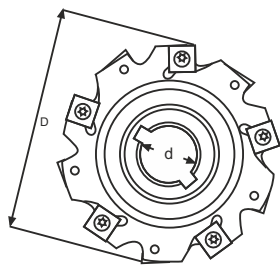


MD...

Grooving and cut-off mill
Fraise à rainurer et à tronçonner
Scheibenfräser
Fresas circulares para acanalar y cortar

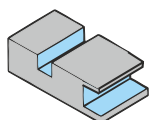
Fresa per scanalatura e taglio per inserto SNHX..



| Codice Code | Dimensioni / Dimensions | | | | | | Inserto Insert | Parti di ricambio / Spare parts | |
|----------------|-------------------------|----|----|-----|----|----|-------------------|---------------------------------|-------|
| | D | d | Z | W | E | H | | | |
| MD063-04 | 63 | 22 | 8 | 4 | 8 | 14 | SNHX1102 | TX3503 | BTX07 |
| MD063-05 | 63 | 22 | 8 | 5 | 8 | 14 | SNHX1103 | TX3504 | BTX07 |
| MD063-06 | 63 | 22 | 6 | 6 | 8 | 14 | SNHX1203 | TX4005 | BTX15 |
| MD080-04 | 80 | 22 | 10 | 4 | 8 | 22 | SNHX1102 | TX3503 | BTX07 |
| MD080-05 | 80 | 22 | 10 | 5 | 8 | 22 | SNHX1103 | TX3504 | BTX07 |
| MD080-06 | 80 | 22 | 8 | 6 | 8 | 22 | SNHX1203 | TX4005 | BTX15 |
| MD100-04 | 100 | 27 | 12 | 4 | 12 | 25 | SNHX1102 | TX3503 | BTX07 |
| MD100-05 | 100 | 27 | 12 | 5 | 12 | 25 | SNHX1103 | TX3504 | BTX07 |
| MD100-06 | 100 | 27 | 10 | 6 | 12 | 25 | SNHX1203 | TX4005 | BTX15 |
| MD100-07/08 | 100 | 27 | 10 | 7/8 | 12 | 25 | SNHX1204/1245 | TX4007 | BTX15 |
| MD100-10 | 100 | 27 | 10 | 10 | 12 | 25 | SNHX1205 | TX4008 | BTX15 |
| MD125-04 | 125 | 32 | 12 | 4 | 12 | 31 | SNHX1102 | TX3503 | BTX07 |
| MD125-05 | 125 | 32 | 12 | 5 | 12 | 31 | SNHX1103 | TX3504 | BTX07 |
| MD125-06 | 125 | 32 | 12 | 6 | 12 | 31 | SNHX1203 | TX4005 | BTX15 |
| MD125-07/08 | 125 | 32 | 12 | 7/8 | 12 | 31 | SNHX1204/1245 | TX4007 | BTX15 |
| MD125-10 | 125 | 32 | 12 | 10 | 12 | 31 | SNHX1205 | TX4008 | BTX15 |
| MD125-12 | 125 | 32 | 12 | 12 | 12 | 31 | SNHX1207 | TX4011 | BTX15 |

| MATERIALI - MATERIALS | | HB | fz (mm) | ap (mm) | Velocità di Taglio - Cutting Speed - Vc m/min | | | | | |
|-----------------------|---|----------|---------|---------|---|--------|--------|--|--|--|
| | | | | | PM4125 | PM4325 | PM6515 | | | |
| P | ACCIAIO NON LEGATO - NOT ALLOY STEEL | 120-300 | 0,2 | 1-3 | 200 | 220 | | | | |
| | ACCIAIO LEGATO - ALLOY STEEL | 180-350 | 0,15 | 1-3 | 160 | 180 | | | | |
| | ACCIAIO ALTO LEGATO - HIGH ALLOY STEEL | 300-330 | 0,15 | 1-3 | 140 | 150 | | | | |
| M | INOX AUSTENITICO - DUPLEX - STAINLESS STEEL | 180-230 | 0,1 | 1-3 | | | | | | |
| K | GHISA GRIGIA - GREY CAST IRON | 120-260 | 0,25 | 1-3 | | | 180 | | | |
| | GHISA SFEROIDALE - SPHEROIDAL CAST IRON | 160-250 | 0,2 | 1-3 | | | 160 | | | |
| | GHISA MALLEABILE - MALLEABLE CAST IRON | 130-230 | 0,2 | 1-3 | | | 180 | | | |
| N | ALLUMINIO E SUE LEGHE - ALUMINIUM | 60-130 | 0,2 | 1-3 | | | 1000 | | | |
| | RAME E SUE LEGHE - COPPER | 90-110 | 0,15 | 1-3 | | | 400 | | | |
| | NON METALLICI - PLASTICS | | 0,15 | 1-3 | | | 500 | | | |
| S | LEGHE RESIST. AL CALORE - HIGH TEMP. ALLOY | 200-320 | 0,1 | 1-3 | | | 40 | | | |
| | TITANIO E SUE LEGHE - TITANIUM | 400-1050 | 0,1 | 1-3 | | | 40 | | | |

Tipo di lavorazione - Recommended machining types



F x 9



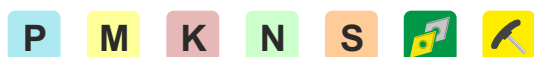
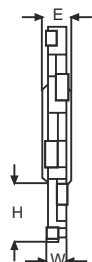
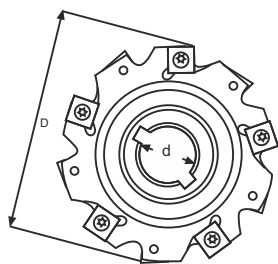
L 2 - L 7



MD...

Grooving and cut-off mill
Fraise à rainurer et à tronçonner
Scheibenfräser
Fresas circulares para acanalar y cortar

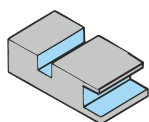
Fresa per scanalatura e taglio per inserto SNHX..



| Codice Code | Dimensioni / Dimensions | | | | | | Inserto Insert | Parti di ricambio / Spare parts | |
|----------------|-------------------------|----|----|-----|----|----|-------------------|---------------------------------|-------|
| | D | d | Z | W | E | H | | | |
| MD160-04 | 160 | 40 | 18 | 4 | 12 | 44 | SNHX1102 | TX3503 | BTX07 |
| MD160-05 | 160 | 40 | 18 | 5 | 12 | 44 | SNHX1103 | TX3504 | BTX07 |
| MD160-06 | 160 | 40 | 16 | 6 | 12 | 44 | SNHX1203 | TX4005 | BTX15 |
| MD160-07/08 | 160 | 40 | 16 | 7/8 | 12 | 44 | SNHX1204/1245 | TX4007 | BTX15 |
| MD160-10 | 160 | 40 | 16 | 10 | 12 | 44 | SNHX1205 | TX4008 | BTX15 |
| MD160-12 | 160 | 40 | 16 | 12 | 12 | 44 | SNHX1207 | TX4011 | BTX15 |
| MD160-14 | 160 | 40 | 15 | 14 | 14 | 44 | SNHX1205 | TX4008 | BTX15 |
| MD200-04 | 200 | 50 | 18 | 4 | 12 | 62 | SNHX1102 | TX3503 | BTX07 |
| MD200-05 | 200 | 50 | 18 | 5 | 12 | 62 | SNHX1103 | TX3504 | BTX07 |
| MD200-06 | 200 | 50 | 18 | 6 | 12 | 62 | SNHX1203 | TX4005 | BTX15 |
| MD200-07/08 | 200 | 50 | 18 | 7/8 | 12 | 62 | SNHX1204/1245 | TX4007 | BTX15 |
| MD200-10 | 200 | 50 | 18 | 10 | 12 | 62 | SNHX1205 | TX4008 | BTX15 |
| MD200-12 | 200 | 50 | 18 | 12 | 12 | 62 | SNHX1207 | TX4011 | BTX15 |
| MD200-14 | 200 | 50 | 18 | 14 | 14 | 62 | SNHX1205 | TX4008 | BTX15 |
| MD250-10 | 250 | 50 | 24 | 10 | 12 | 87 | SNHX1205 | TX4008 | BTX15 |
| MD250-12 | 250 | 50 | 20 | 12 | 12 | 87 | SNHX1207 | TX4011 | BTX15 |
| MD250-14 | 250 | 50 | 24 | 14 | 14 | 87 | SNHX1205 | TX4008 | BTX15 |

| MATERIALI - MATERIALS | | HB | fz (mm) | ap (mm) | Velocità di Taglio - Cutting Speed - Vc m/min | | | | | |
|-----------------------|---|----------|---------|---------|---|--------|--------|--|--|--|
| | | | | | PM4125 | PM4325 | PM6515 | | | |
| P | ACCIAIO NON LEGATO - NOT ALLOY STEEL | 120-300 | 0,2 | 1-3 | 200 | 220 | | | | |
| | ACCIAIO LEGATO - ALLOY STEEL | 180-350 | 0,15 | 1-3 | 160 | 180 | | | | |
| | ACCIAIO ALTO LEGATO - HIGH ALLOY STEEL | 300-330 | 0,15 | 1-3 | 140 | 150 | | | | |
| M | INOX AUSTENITICO - DUPLEX - STAINLESS STEEL | 180-230 | 0,1 | 1-3 | | | | | | |
| K | GHISA GRIGIA - GREY CAST IRON | 120-260 | 0,25 | 1-3 | | | 180 | | | |
| | GHISA SFEROIDALE - SPHEROIDAL CAST IRON | 160-250 | 0,2 | 1-3 | | | 160 | | | |
| | GHISA MALLEABILE - MALLEABLE CAST IRON | 130-230 | 0,2 | 1-3 | | | 180 | | | |
| N | ALLUMINIO E SUE LEGHE - ALUMINIUM | 60-130 | 0,2 | 1-3 | | | 1000 | | | |
| | RAME E SUE LEGHE - COPPER | 90-110 | 0,15 | 1-3 | | | 400 | | | |
| | NON METALLICI - PLASTICS | | 0,15 | 1-3 | | | 500 | | | |
| S | LEGHE RESIST. AL CALORE - HIGH TEMP. ALLOY | 200-320 | 0,1 | 1-3 | | | 40 | | | |
| | TITANIO E SUE LEGHE - TITANIUM | 400-1050 | 0,1 | 1-3 | | | 40 | | | |

Tipo di lavorazione - Recommended machining types



F x 9



L 2 - L 7

