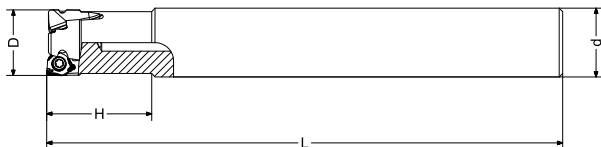


M385D...

Shoulder milling cutters AT 90°
Fraises à dresser à 90°
Schafffräser mit Zylinderschaft 90°
Fresas para escuadrar a 90°

Frese per spallamenti a 90° per inserto WNMX0403..



P

M

K

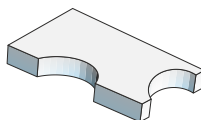
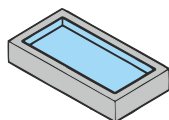
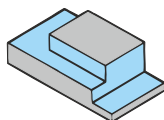
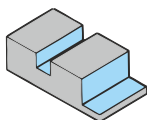
N

S

[illegible]

MATERIALI - MATERIALS		HB	fz (mm)	ap (mm)	Velocità di Taglio – Cutting Speed – Vc m/min							
					PM4125	PM4325	PM4425	PM4530				
P	ACCIAIO NON LEGATO - NOT ALLOY STEEL	120-300	0,2	1-3	150	200	250	220				
	ACCIAIO LEGATO - ALLOY STEEL	180-350	0,15	1-3	130	180	220	200				
	ACCIAIO ALTO LEGATO - HIGH ALLOY STEEL	300-330	0,15	1-3	110	150	200	170				
M	INOX AUSTENITICO - DUPLEX - STAINLESS STEEL	180-230	0,1	1-3	100		150	130				
K	GHISA GRIGIA - GREY CAST IRON	120-260	0,25	1-3			200	180				
	GHISA SFEROIDALE - SPHEROIDAL CAST IRON	160-250	0,2	1-3			180	160				
	GHISA MALLEABILE - MALLEABLE CAST IRON	130-230	0,2	1-3			160	180				
N	ALLUMINIO E SUE LEGHE - ALUMINIUM	60-130	0,2	1-3								
	RAME E SUE LEGHE - COPPER	90-110	0,15	1-3								
	NON METALLICI - PLASTICS		0,15	1-3								
S	LEGHE RESIST. AL CALORE - HIGH TEMP. ALLOY	200-320	0,1	1-3			40					
	TITANIO E SUE LEGHE - TITANIUM	400-1050	0,1	1-3			50					

Tipo di lavorazione - Recommended machining types



F x 11



L 2 - L 7

