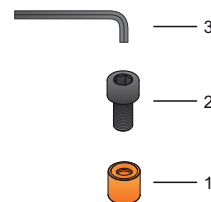
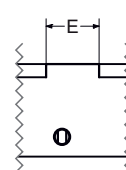
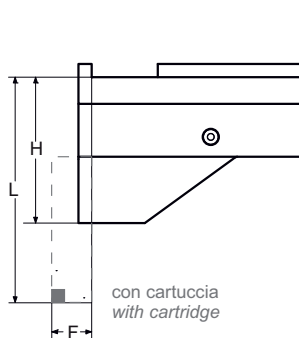
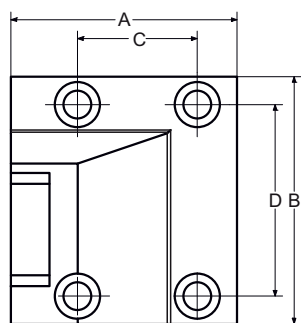


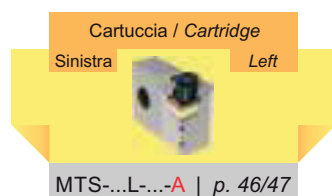
MTS-DS1L-B1B4C-A

DOOSAN (statico)

Base Modulare 0° con **attacco lungo** Doosan serie 1 tipo "A" / Modular Basement 0° with **long connection** Doosan series 1 type "A"



Codice Articolo Item Code	A	B	C	D	E	H	L	F	Peso Weight	Prezzo Price
MTS-DS1L-B1B4C-A	85	93	45	72	20	55	85	15	2,10 kg	€ 185,00

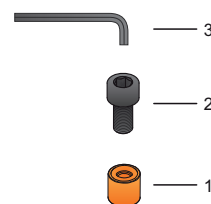
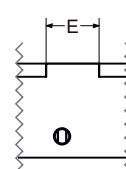
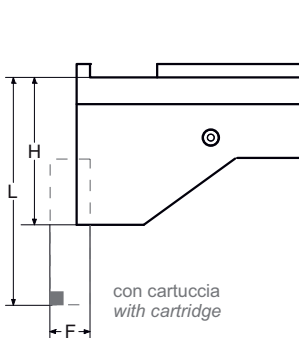
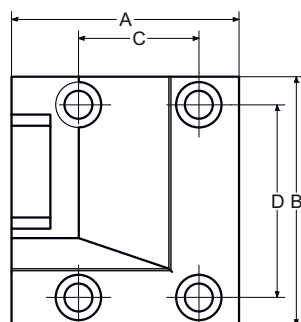


Parti di Ricambio / Spare Parts		
1	2	3
CSC83 (5 pcs)	VB0825	CBR60
€ 13,00	€ 4,00	€ 6,00

MTS-DS1L-B2B3C-B

DOOSAN (statico)

Base Modulare 0° con **attacco lungo** Doosan serie 1 tipo "B" / Modular Basement 0° with **long connection** Doosan series 1 type "B"



Codice Articolo Item Code	A	B	C	D	E	H	L	F	Peso Weight	Prezzo Price
MTS-DS1L-B2B3C-B	85	93	45	72	20	55	85	15	2,10 kg	€ 185,00

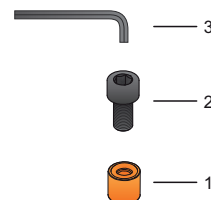
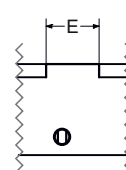
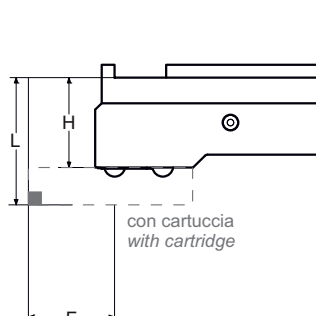
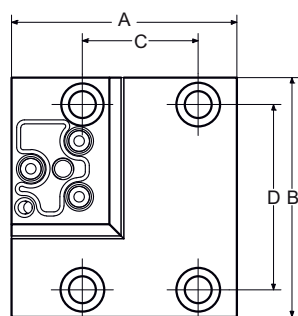


Parti di Ricambio / Spare Parts		
1	2	3
CSC83 (5 pcs)	VB0825	CBR60
€ 13,00	€ 4,00	€ 6,00

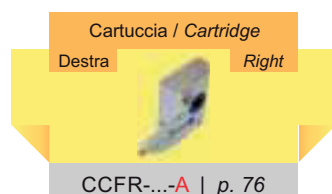
MTS-DS1M-C2C3C-A

DOOSAN (statico)

Base Modulare 90° con **attacco medio** Doosan serie 1 tipo "A" / Modular Basement 90° with **medium connection** Doosan series 1 type "A"



Codice Articolo Item Code	A	B	C	D	E	H	L	F	Peso Weight	Prezzo Price
MTS-DS1M-C2C3C-A	87,5	93	45	72	20	35	49	33,5	1,90 kg	€ 200,00

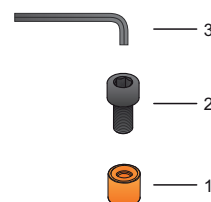
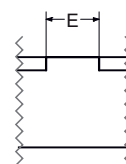
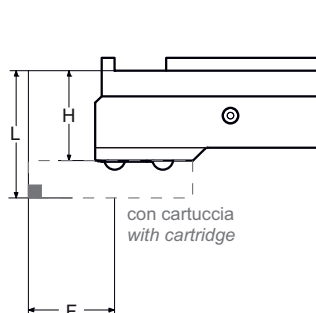
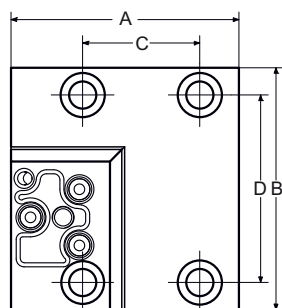


Parti di Ricambio / Spare Parts		
		
CSC83 (5 pcs) € 13,00	VB0825 € 4,00	CBR60 € 6,00

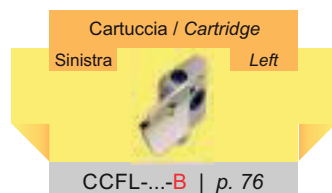
MTS-DS1M-C1C4C-B

DOOSAN (statico)

Base Modulare 90° con **attacco medio** Doosan serie 1 tipo "B" / Modular Basement 90° with **medium connection** Doosan series 1 type "B"



Codice Articolo Item Code	A	B	C	D	E	H	L	F	Peso Weight	Prezzo Price
MTS-DS1M-C1C4C-B	87,5	93	45	72	20	35	49	33,5	1,90 kg	€ 200,00

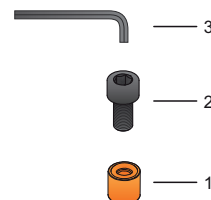
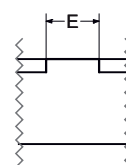
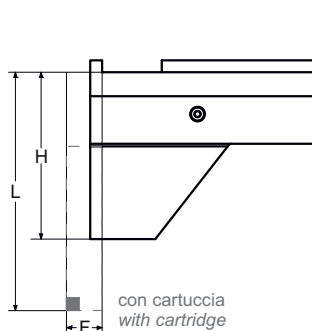
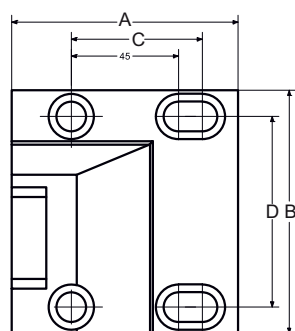


Parti di Ricambio / Spare Parts		
		
CSC83 (5 pcs) € 13,00	VB0825 € 4,00	CBR60 € 6,00

MTS-DS2L-B1B4C-A

DOOSAN (statico)

Base Modulare 0° con **attacco lungo** Doosan serie 2 tipo "A" / Modular Basement 0° with **long connection** Doosan series 2 type "A"



Codice Articolo Item Code	A	B	C	D	E	H	L	F	Peso Weight	Prezzo Price
MTS-DS2L-B1B4C-A	95	102	55	80	20	70	100	15	2,80 kg	€ 195,00

Cartuccia / Cartridge

Sinistra

Left



MTS-...L-...-A | p. 46/47

Parti di Ricambio / Spare Parts

1



CSC83 (5 pcs)

€ 13,00

2



VB0825

€ 4,00

3



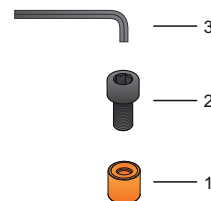
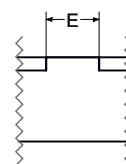
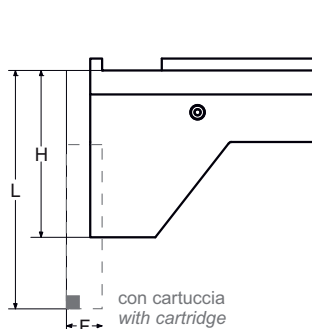
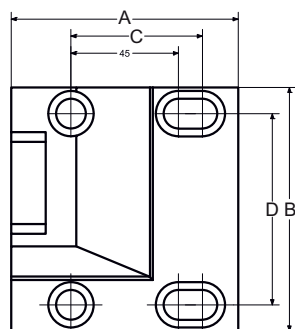
CBR60

€ 6,00

MTS-DS2L-B2B3C-B

DOOSAN (statico)

Base Modulare 0° con **attacco lungo** Doosan serie 2 tipo "B" / Modular Basement 0° with **long connection** Doosan series 2 type "B"



Codice Articolo Item Code	A	B	C	D	E	H	L	F	Peso Weight	Prezzo Price
MTS-DS2L-B2B3C-B	95	102	55	80	20	70	100	15	2,80 kg	€ 195,00

Cartuccia / Cartridge

Destra

Right



MTS-...R-...-B | p. 46/47

Parti di Ricambio / Spare Parts

1



CSC83 (5 pcs)

€ 13,00

2



VB0825

€ 4,00

3



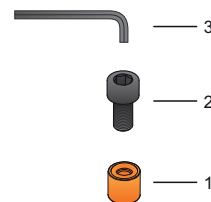
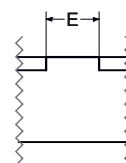
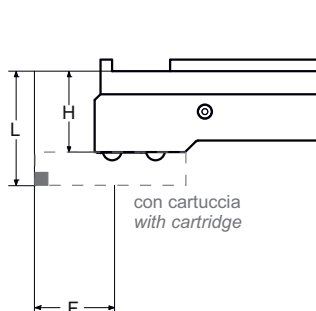
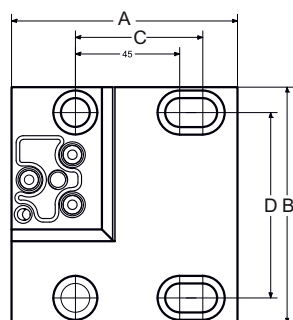
CBR60

€ 6,00

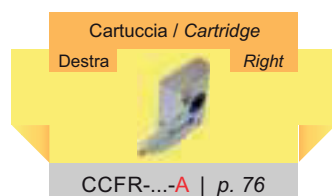
MTS-DS2M-C2C3C-A



DOOSAN (statico)

Base Modulare 90° con **attacco medio** Doosan serie 2 tipo "A" / Modular Basement 90° with **medium connection** Doosan series 2 type "A"



Codice Articolo Item Code	A	B	C	D	E	H	L	F	Peso Weight	Prezzo Price
MTS-DS2M-C2C3C-A	97,5	102	55	80	20	35	49	33,5	2,20 kg	€ 205,00

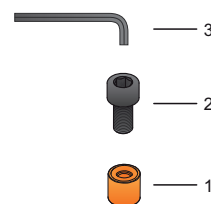
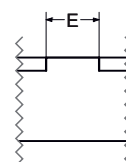
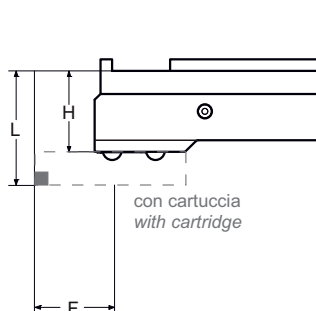
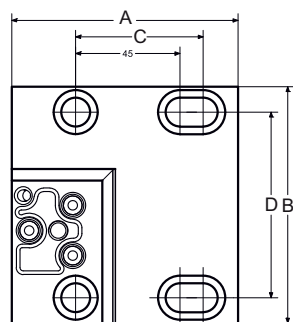


Parti di Ricambio / Spare Parts		
1	2	3
		
CSC83 (5 pcs)	VB0825	CBR60
€ 13,00	€ 4,00	€ 6,00

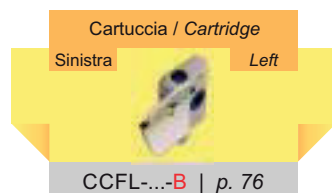
MTS-DS2M-C1C4C-B


DOOSAN (statico)

Base Modulare 90° con **attacco medio** Doosan serie 2 tipo "B" / Modular Basement 90° with **medium connection** Doosan series 2 type "B"



Codice Articolo Item Code	A	B	C	D	E	H	L	F	Peso Weight	Prezzo Price
MTS-DS2M-C1C4C-B	97,5	102	55	80	20	35	49	33,5	2,20 kg	€ 205,00



Parti di Ricambio / Spare Parts		
1	2	3
		
CSC83 (5 pcs)	VB0825	CBR60
€ 13,00	€ 4,00	€ 6,00